



SCHOOL OF ARCTIC AND SUBARCTIC STUDIES

LABRADOR INSTITUTE OF MEMORIAL UNIVERSITY

Meeting of the Academic Council

November 30th, 2021



Present:

ASHLEE CUNSOLO (Chair; Dean, School of Arctic and Subarctic Studies)

ARN KEELING (Head of Dept. of Geography, Cross-Appointed with SASS)

JODIE LANE (Director of Education, Nunatsiavut Government)

SCOTT NEILSEN (Assistant Professor, School of Arctic and Subarctic Studies & Department of Archaeology)

SYLVIA MOORE (Assistant Professor, School of Arctic and Subarctic Studies & Department of Education)

NATHANIEL POLLOCK (Research Associate & Adjunct Professor, SASS)

LISA RANKIN (Professor of Archaeology, Cross-Appointed with SASS)

ALEX SAWATZKY (Secretary; Special Projects Manager & Adjunct Professor, SASS)

Regrets:

KANANI DAVIS (Chief Executive Officer, Mamu Tshishkutamashutau Innu Education)

AMY HUDSON (Governance and Strategic Planning Lead, NunatuKavut Community Council)

THOMAS PIGGOTT (Medical Officer of Health; Adjunct Professor, SASS)

Guests:

PRESIDENT VIANNE TIMMONS (President & Vice-Chancellor, Memorial University)

TODD CONSTANTINE, RUTH HICKEY, & KIM MYRICK (Centre for Innovation in Teaching and Learning)

DISCUSSION: *Sharing perspectives and aspirations for education with President Timmons*

RELATIONAL FOUNDATION BETWEEN NUNATSIAVUT AND MEMORIAL HAS BEEN BUILT — WE ARE GROWING TOGETHER

NEXT STEP IS BUILDING THE PHYSICAL FOUNDATION

NEED PHYSICAL CLASSROOM SPACES IN NUNATSIAVUT COMMUNITIES

CAN GUARANTEE SPOTS WILL BE FILLED!



MEANINGFUL COMMUNITY ENGAGEMENT IS WHAT MAKES PROGRAMMING AND RESEARCH SUCCESSFUL



JODIE LANE
NUNATSIAVUT GOVERNMENT

SECONDARY SUPPORTS FOR STUDENTS (E.G. ON-CAMPUS SOCIAL WORK, HOUSING, AND CHILD CARE)

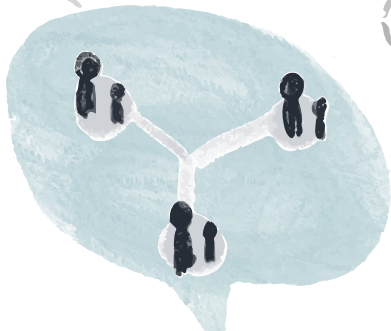


SCOTT NEILSEN
SASS

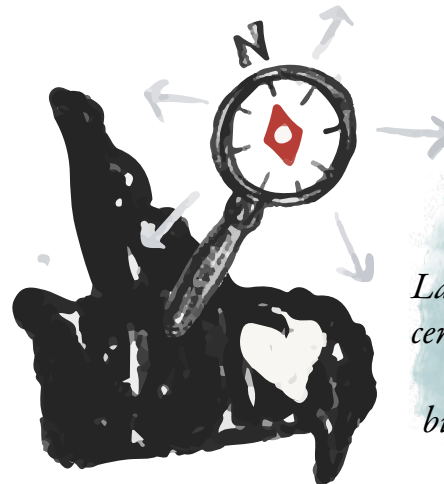
CONSOLIDATED EFFORTS AROUND SOCIAL WORK & CHILD AND YOUTH CARE

CONNECTING DISCRETE PROGRAMS AND ASSOCIATED SUCCESSES

UNIQUE OPPORTUNITY FOR NORTHERN-LED TRAINING, TEACHING, & LEARNING THROUGH SASS



NATHANIEL POLLOCK
SASS



The President's aspiration for the Labrador Campus is that it becomes the central hub for all Memorial's Northern initiatives. What we are doing is building a lasting legacy for Labrador.

DISCUSSION:

Roundtable on integrating technology and education with the Centre for Innovation in Teaching and Learning (CITL)

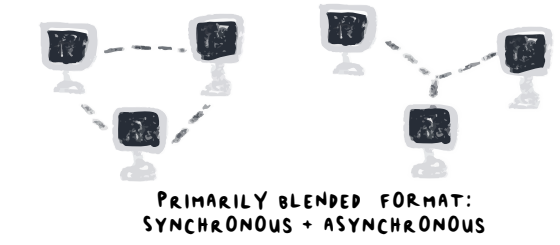
HOW CAN CITL SUPPORT OUR WORK AT SASS?

HOW ARE COURSES CURRENTLY BEING DELIVERED?

COMMON CHALLENGES

HOW CAN TECHNOLOGY CONNECT PEOPLE THROUGH PLACE-BASED LEARNING, FROM DIFFERENT PLACES?

Technology and instruction go hand-in-hand; can't build one without the other.



SCOTT

INTERESTED IN DOING MORE LAND-BASED PROGRAMMING



ENHANCES DISCUSSIONS AND ENGAGEMENT WITH THE CONTENT

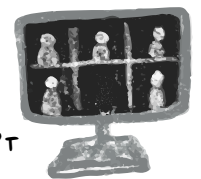
SYLVIA

GRAD COURSES ON INDIGENOUS EDUCATION ARE BEST DELIVERED SYNCHRONOUSLY

JODIE

SEEING MORE NG STUDENTS OPTING FOR ONLINE LEARNING MODELS

MANY FACTORS INVOLVED IN DECISION/ABILITY TO GO AWAY FOR SCHOOL



SOME STUDENTS AREN'T COMFORTABLE WITH BEING ON-SCREEN

WEBEX DOESN'T WORK AS WELL AS ZOOM

SYLVIA

JODIE

BANDWIDTH IS AN ISSUE IN COMMUNITIES

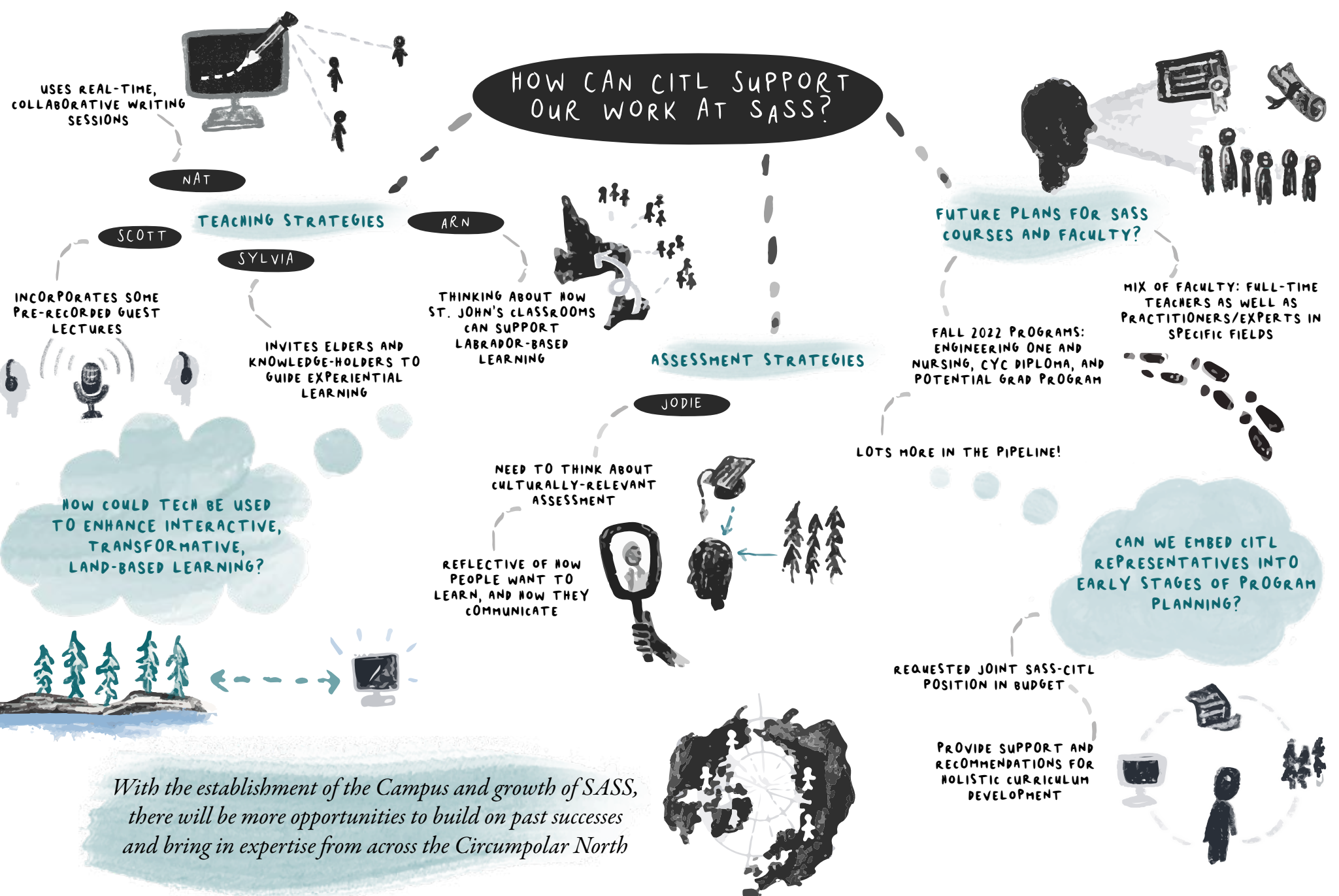
NEEDING ADDITIONAL TECH SUPPORT WITH CLASSROOM-CLASSROOM CONNECTIONS

SOUND QUALITY ISSUES: EVERY LITTLE SOUND FROM THE CLASSROOM IS HEARD BY THOSE TUNING IN REMOTELY



DISCUSSION:

Roundtable on integrating technology and education with the Centre for Innovation in Teaching and Learning (CITL)



With the establishment of the Campus and growth of SASS, there will be more opportunities to build on past successes and bring in expertise from across the Circumpolar North

✓/✗ APPROVALS & UPDATES !

! CAMPUS APPROVALS



2/3 COMMITTEE APPROVALS

- FINAL COMMITTEE VOTE IS THIS AFTERNOON (NOV. 30TH)

* UPDATE APPROVED!



- BOARD OF REGENTS VOTE IN DECEMBER

* UPDATE PASSED!



- EMBARGOED UNTIL JANUARY 20, 2022



- AS LONG AS WE HAVE EVERYTHING APPROVED BY MAY BOARD MEETING

- CAN NOW PILOT SPECIAL TOPICS COURSES BEFORE REGULARIZING

- WON'T BE ON THE ONLINE CALENDAR, BUT CAN USE OUR OWN ADVERTISING

! CURRICULUM DEVELOPMENT

- DRAFT OF ENGINEERING ONE INCLUDED IN EMAIL ATTACHMENTS



- WILL START CERTIFICATE DEVELOPMENT IN JANUARY

- CYC DIPLOMA COURSES DEVELOPED, NEED TO BE REVIEWED



- BUSINESS CASE DEVELOPED



! NO DECEMBER MEETING!

- WILL CONVENE IN THE NEW YEAR - HAPPY HOLIDAYS!

* NEXT MEETING: JANUARY 25TH @ 10:00AM AST